

ACUGIS

Field Data Enterprise



Field Data Enterprise

Field Data Enterprise is a complete Field Data and Survey solution. We leverage the best Open Source tools, along with commercial support:

- Merjin Maps Server CE
- GeoSync
- GeoServer or GeoNode



Mergin Maps Server CE

Mergin Maps Server Community Edition (CE), together with Mergin Maps Mobile and QGIS plugin, provides complete synchronization between QGIS and Mobile.

Field Data Enterprise provides a Mergin Maps CE Server, but if you have an existing Mergin Maps server or [MerginMaps.com](https://merginmaps.com) Team Account, either can be used in its place.

GeoSync

GeoSync is our intuitive, browser-based UI for DB-Sync and GeoDiff.

Add QGIS Projects in just a few clicks and all data is synchronized to PostGIS. You can use local PostGIS databases on the GeoSync server or your own remote PostGIS databases.

While the power of GeoSync is in the data within PostGIS, GeoSync also provides a multi-user data hub for viewing your survey data in both map and tabular format.



GeoServer or GeoNode

Field Data Enterprise includes a fully managed GeoServer or GeoNode instance.

By creating Stores in GeoServer from your GeoSync PostGIS databases, your GeoServer and GeoNode instance is always up to date with real-time data from your mobile users.

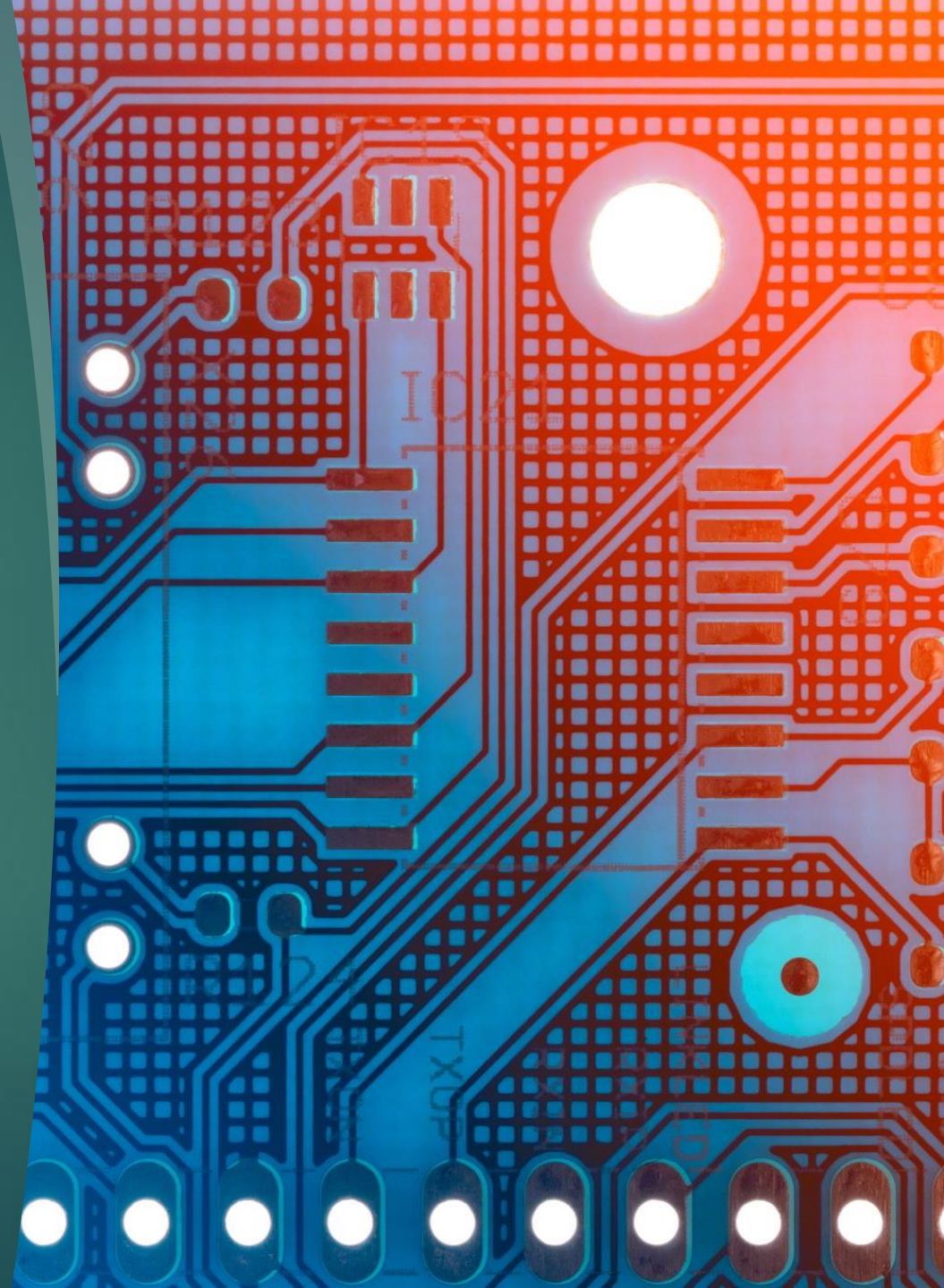
You can also scale your GeoServer or GeoNode instances:

- ▶ Vertical Scaling: Add resources such as RAM, CPU, and SSD
- ▶ Horizontal Scaling: Add instances to create High Availability

Node Specifications

Each Field Data Enterprise service includes three (3) VM nodes. All nodes have equal resources as defined in the package specifications. All nodes include:

- ▶ SSD NVME
- ▶ DDR4 ECC RAM, scalable to 256 GB
- ▶ Intel 8280 CPU @ 2.70GHz, scalable to 32 cores
- ▶ 10 Gbps Throughput (Bandwidth/Transfer)
- ▶ Weekly Backups (with Daily and Hourly options)
- ▶ Nagios Monitoring
- ▶ High Availability Data Directory



Hosting Locations and Certifications

AcuGIS Field Data Enterprise is available at 11 hosting locations worldwide

- ▶ Locations: New York City, San Francisco, Toronto, London, Paris, Frankfurt, Stockholm, Amsterdam, Madrid, Sao Paulo, Santiago, Sydney, Singapore, Tokyo
- ▶ SSAE16, SOC, PCI, and HIPAA-Compliant. ISO 9001: 2008 for quality management systems and ISO/IEC 27001:2005 for information security management systems.
- ▶ For additional cost, Field Data Enterprise can also be deployed on AWS, Azure, or Google Cloud.

[Get Started Now](#)